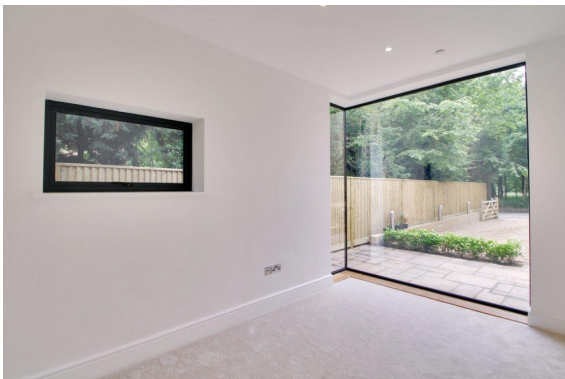




Madeleine Rose

Stede Hill
Harrietsham
ME17 1NR



- Stunning converted Edwardian Water Tower
- A unique and contemporary property
- Light and Spacious accommodation
- Countryside views
- 4 Bedrooms over 3 floors
- Wow factor
- Fascinating building
- Available Now

Available 20th November 2019 - LONG LET

Magnificent conversion of a former Edwardian Water Tower which has been transformed into a truly unique and contemporary home providing stunning light and spacious accommodation with beautiful countryside views. No expense has been spared and stylish high quality fittings have been used throughout, yet care has been taken to preserve the history of the original building. Beautifully gardens and private parking for several vehicles

Available 20th November 2019 - LONG LET

MINIMUM HOUSEHOLD INCOME REQUIREMENT £78,000 PER YEAR

Fantastic reception hall with floor to ceiling glass overlooking the surrounding farmland. The hall has a full-height spiral staircase to the three floors of the tower. A corridor leads from the entrance hall to an open plan kitchen/breakfast/sitting room which is a stunning feature of the property with a wood burning stove, underfloor heating and a curved wall with sliding glazed doors to the garden. The kitchen has white quartz work surfaces, fitted dishwasher. There is a utility room with washing machine. There are two double bedrooms and a large bathroom with bath, separate shower cubicle, basin and W.C. Spiral Staircase to:

First Floor

Double Bedroom with wonderful views, which could be adapted to be a dressing room for the master bedroom or a study if required.

Second Floor

A spacious luxury family bathroom with separate shower .

Third Floor

A superb master bedroom, with views over the surrounding countryside.

Gardens have a decked terrace area and lawns. Lovely outlook.

MINIMUM HOUSEHOLD INCOME REQUIREMENT £78,000 PER YEAR

Price: £2650 per month

**Madeleine Rose
Bower House
North Street Sutton Valence
Kent
ME17 3HR**

Tel: 01622 844455