



Madeleine Rose

North Street  
Sutton Valence  
ME17 3HR



- Brand new conversion
- Immaculate throughout
- Versatile living accommodation
- Spacious open plan kitchen/reception room
- Garden
- Village location
- Close to mainline station for commuting



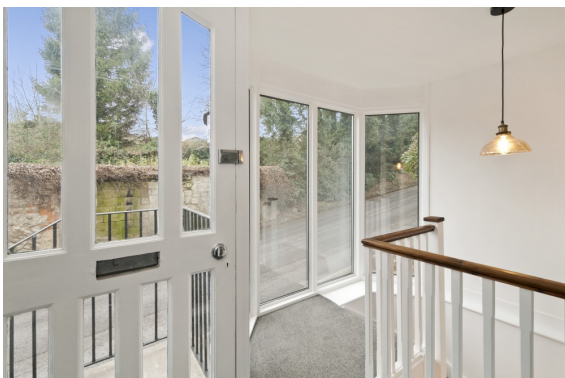
Available 1st Dec 2019 - LONG LET

MINIMUM HOUSEHOLD INCOME REQUIREMENT - £27,000

Garden Flat located in the desirable village of Sutton Valence. It is a brand new conversion, with a private garden.

Available 1st Dec 2019 - LONG LET

New conversion of 1/2 bedroom flat located within the village of Sutton Valence.



Entrance hall, with door to bedroom/reception room with door to the private garden and to separate WC and utility room, further door to bedroom with hanging storage.

Staircase to lower ground floor hallway, with large storage cupboard and doors to the kitchen/diner, with its fabulous fitted kitchen with appliances and space and plumbing for a fridge freezer. Space for wall hung TV. Large shower room with hand basin and WC and storage cupboard.

Pathway at the side leads to the private garden for the flat.

MINIMUM HOUSEHOLD INCOME REQUIREMENT - £27,000

Price: £875 per month

Madeleine Rose  
Bower House  
North Street Sutton Valence  
Kent  
ME17 3HR

**Tel: 01622 844455**